

PUBLISHED EVERY AFTERNOON.
JAMES BROWN, Proprietor.
D. BROWN, Editor.
H. O. STILLMAN, Commercial Editor.

Rates of Advertising.
(States lines or less makes a square.)
One Square, 1 day, \$0.50; One Square, 2 months, \$8.00

Miscellaneous.
ARTIFICIAL FRUIT of unsurpassed quality inserted in a style at the new elegant building...

Trunks! Trunks!
MANUFACTURED to order, and a great variety on hand for sale.

THE BLOCKADE NOT BROKEN.
THE GREAT CHINA EMPORIUM!
125 West First Street.

FRUIT AND JAM CROCKERY
ever offered to the public in Oswego. Having had experience in selecting stock in the Father Country...

KEAPER
than any other building in Oswego, N. Y.
Don't forget the place, opposite O'Connell's, Mills, Hart & Co.'s Dry Goods establishment...

Thurber & Son's
BOSTON CRACKERS, Milk Biscuits, Soda Biscuits, etc.

TO BREWERS.
A RARE CHANCE.
THE SUBSCRIBER offers for sale his established and extensive brewery premises...

BREWERY AND DWELLING HOUSE.
with their necessary appurtenances and repair. The brewery consists of a SUPERIOR MILLING MACHINE...

DWELLING HOUSE.
with every requisite for a large family, and a good garden, well stocked with the best fruit.

A Card.
The effect of prejudice, which so often warps the judgment, even of individuals whose opinions on all other subjects are correct...

DRS. E. A. & F. W. POTTER.
Removed to No. 32 WEST FIRST STREET, two doors south of the Post Office.

D. HERRICK
WILL CONTINUE BUSINESS AT HIS OLD STAND, NO. 2 JEFFERSON BLOCK.

WHERE NEW GOODS are and where you can get them at the lowest prices...

HORSE-SHOING.
HOINS-SHOING is still going down. I will therefore lower it to the following prices:

Removal.
THE SUBSCRIBER would inform his old patron and the public generally that he has removed his shop to the

ON AND AFTER APRIL 30, 1863.
the mails from this office will close as follows:

Business Directory.
CONNECTICUT
Mutual Life Insurance Company, OF HARTFORD, CONN.

ORGANIZED 1846. CAPITAL \$5,000,000.
Amount paid widows and orphans, to February, 1863, \$3,088,491.77

This Company furnishes insurance in all the various forms for which Life Insurance is desirable.

It is purely mutual, the policy-holders get all the surplus over the exact cost of insurance.

It offers abundant security, in a large accumulated fund, derived from Premiums, amounting to over \$5,000,000.

It is economy in the management of business permits large dividends to policy-holders, which have averaged 50 per cent. per annum.

It is a safe investment, as it is paid during the life of the insured, in cash to those who pay their premiums in cash, or applied in cancelling the notes of those who pay their premiums partly by note.

It is a safe investment, as it is paid during the life of the insured, in cash to those who pay their premiums in cash, or applied in cancelling the notes of those who pay their premiums partly by note.

It is a safe investment, as it is paid during the life of the insured, in cash to those who pay their premiums in cash, or applied in cancelling the notes of those who pay their premiums partly by note.

It is a safe investment, as it is paid during the life of the insured, in cash to those who pay their premiums in cash, or applied in cancelling the notes of those who pay their premiums partly by note.

It is a safe investment, as it is paid during the life of the insured, in cash to those who pay their premiums in cash, or applied in cancelling the notes of those who pay their premiums partly by note.

It is a safe investment, as it is paid during the life of the insured, in cash to those who pay their premiums in cash, or applied in cancelling the notes of those who pay their premiums partly by note.

It is a safe investment, as it is paid during the life of the insured, in cash to those who pay their premiums in cash, or applied in cancelling the notes of those who pay their premiums partly by note.

It is a safe investment, as it is paid during the life of the insured, in cash to those who pay their premiums in cash, or applied in cancelling the notes of those who pay their premiums partly by note.

It is a safe investment, as it is paid during the life of the insured, in cash to those who pay their premiums in cash, or applied in cancelling the notes of those who pay their premiums partly by note.

It is a safe investment, as it is paid during the life of the insured, in cash to those who pay their premiums in cash, or applied in cancelling the notes of those who pay their premiums partly by note.

It is a safe investment, as it is paid during the life of the insured, in cash to those who pay their premiums in cash, or applied in cancelling the notes of those who pay their premiums partly by note.

It is a safe investment, as it is paid during the life of the insured, in cash to those who pay their premiums in cash, or applied in cancelling the notes of those who pay their premiums partly by note.

It is a safe investment, as it is paid during the life of the insured, in cash to those who pay their premiums in cash, or applied in cancelling the notes of those who pay their premiums partly by note.

It is a safe investment, as it is paid during the life of the insured, in cash to those who pay their premiums in cash, or applied in cancelling the notes of those who pay their premiums partly by note.

It is a safe investment, as it is paid during the life of the insured, in cash to those who pay their premiums in cash, or applied in cancelling the notes of those who pay their premiums partly by note.

It is a safe investment, as it is paid during the life of the insured, in cash to those who pay their premiums in cash, or applied in cancelling the notes of those who pay their premiums partly by note.

It is a safe investment, as it is paid during the life of the insured, in cash to those who pay their premiums in cash, or applied in cancelling the notes of those who pay their premiums partly by note.

It is a safe investment, as it is paid during the life of the insured, in cash to those who pay their premiums in cash, or applied in cancelling the notes of those who pay their premiums partly by note.

It is a safe investment, as it is paid during the life of the insured, in cash to those who pay their premiums in cash, or applied in cancelling the notes of those who pay their premiums partly by note.

It is a safe investment, as it is paid during the life of the insured, in cash to those who pay their premiums in cash, or applied in cancelling the notes of those who pay their premiums partly by note.

It is a safe investment, as it is paid during the life of the insured, in cash to those who pay their premiums in cash, or applied in cancelling the notes of those who pay their premiums partly by note.

It is a safe investment, as it is paid during the life of the insured, in cash to those who pay their premiums in cash, or applied in cancelling the notes of those who pay their premiums partly by note.

It is a safe investment, as it is paid during the life of the insured, in cash to those who pay their premiums in cash, or applied in cancelling the notes of those who pay their premiums partly by note.

It is a safe investment, as it is paid during the life of the insured, in cash to those who pay their premiums in cash, or applied in cancelling the notes of those who pay their premiums partly by note.

Miscellaneous.
1863.
PLEASURE & BUSINESS TRAVEL.
American Express Line.

L. ONTARIO & RIVER ST. LAWRENCE.
ONTARIO STEAMBOAT COMPANY.
Will, during the season of pleasure travel, commencing on MONDAY, 22d OF JUNE, run their large and commodious Lake Steamers,

BAY STATE, Capt. J. J. Moulton, ONTARIO, Capt. E. J. Loring, CANTARAC, Thos. H. Loring, And new and splendid River Steamers,

ALEXANDRIA, Capt. BOGGS, MONTREAL, Capt. DeWitt, FORMING A DAILY LINE THROUGH LAKE ONTARIO & RIVER ST. LAWRENCE.

GOING DOWNWARDS:
Leave Toronto, Daily, (Sundays excepted), 6.30 A. M.
" Kingston, Daily, " " 10.30 "
" Niagara, Daily, " " 10.30 "
" Charlotte, Daily, " " 10.30 P. M.

GOING UPWARDS:
Leave Oswego, Daily, (Sundays excepted), 10.00 P. M.
" Kingston, Daily, (Monday excepted), 4.45 "
" Toronto, Daily, (Monday excepted), 1.30 P. M.

GOING UPWARDS:
Leave Oswego, Daily, (Sundays excepted), 10.00 P. M.
" Kingston, Daily, (Monday excepted), 4.45 "
" Toronto, Daily, (Monday excepted), 1.30 P. M.

GOING UPWARDS:
Leave Oswego, Daily, (Sundays excepted), 10.00 P. M.
" Kingston, Daily, (Monday excepted), 4.45 "
" Toronto, Daily, (Monday excepted), 1.30 P. M.

GOING UPWARDS:
Leave Oswego, Daily, (Sundays excepted), 10.00 P. M.
" Kingston, Daily, (Monday excepted), 4.45 "
" Toronto, Daily, (Monday excepted), 1.30 P. M.

GOING UPWARDS:
Leave Oswego, Daily, (Sundays excepted), 10.00 P. M.
" Kingston, Daily, (Monday excepted), 4.45 "
" Toronto, Daily, (Monday excepted), 1.30 P. M.

GOING UPWARDS:
Leave Oswego, Daily, (Sundays excepted), 10.00 P. M.
" Kingston, Daily, (Monday excepted), 4.45 "
" Toronto, Daily, (Monday excepted), 1.30 P. M.

GOING UPWARDS:
Leave Oswego, Daily, (Sundays excepted), 10.00 P. M.
" Kingston, Daily, (Monday excepted), 4.45 "
" Toronto, Daily, (Monday excepted), 1.30 P. M.

GOING UPWARDS:
Leave Oswego, Daily, (Sundays excepted), 10.00 P. M.
" Kingston, Daily, (Monday excepted), 4.45 "
" Toronto, Daily, (Monday excepted), 1.30 P. M.

GOING UPWARDS:
Leave Oswego, Daily, (Sundays excepted), 10.00 P. M.
" Kingston, Daily, (Monday excepted), 4.45 "
" Toronto, Daily, (Monday excepted), 1.30 P. M.

GOING UPWARDS:
Leave Oswego, Daily, (Sundays excepted), 10.00 P. M.
" Kingston, Daily, (Monday excepted), 4.45 "
" Toronto, Daily, (Monday excepted), 1.30 P. M.

GOING UPWARDS:
Leave Oswego, Daily, (Sundays excepted), 10.00 P. M.
" Kingston, Daily, (Monday excepted), 4.45 "
" Toronto, Daily, (Monday excepted), 1.30 P. M.

GOING UPWARDS:
Leave Oswego, Daily, (Sundays excepted), 10.00 P. M.
" Kingston, Daily, (Monday excepted), 4.45 "
" Toronto, Daily, (Monday excepted), 1.30 P. M.

GOING UPWARDS:
Leave Oswego, Daily, (Sundays excepted), 10.00 P. M.
" Kingston, Daily, (Monday excepted), 4.45 "
" Toronto, Daily, (Monday excepted), 1.30 P. M.

GOING UPWARDS:
Leave Oswego, Daily, (Sundays excepted), 10.00 P. M.
" Kingston, Daily, (Monday excepted), 4.45 "
" Toronto, Daily, (Monday excepted), 1.30 P. M.

GOING UPWARDS:
Leave Oswego, Daily, (Sundays excepted), 10.00 P. M.
" Kingston, Daily, (Monday excepted), 4.45 "
" Toronto, Daily, (Monday excepted), 1.30 P. M.

GOING UPWARDS:
Leave Oswego, Daily, (Sundays excepted), 10.00 P. M.
" Kingston, Daily, (Monday excepted), 4.45 "
" Toronto, Daily, (Monday excepted), 1.30 P. M.

GOING UPWARDS:
Leave Oswego, Daily, (Sundays excepted), 10.00 P. M.
" Kingston, Daily, (Monday excepted), 4.45 "
" Toronto, Daily, (Monday excepted), 1.30 P. M.

GOING UPWARDS:
Leave Oswego, Daily, (Sundays excepted), 10.00 P. M.
" Kingston, Daily, (Monday excepted), 4.45 "
" Toronto, Daily, (Monday excepted), 1.30 P. M.

GOING UPWARDS:
Leave Oswego, Daily, (Sundays excepted), 10.00 P. M.
" Kingston, Daily, (Monday excepted), 4.45 "
" Toronto, Daily, (Monday excepted), 1.30 P. M.

GOING UPWARDS:
Leave Oswego, Daily, (Sundays excepted), 10.00 P. M.
" Kingston, Daily, (Monday excepted), 4.45 "
" Toronto, Daily, (Monday excepted), 1.30 P. M.

GOING UPWARDS:
Leave Oswego, Daily, (Sundays excepted), 10.00 P. M.
" Kingston, Daily, (Monday excepted), 4.45 "
" Toronto, Daily, (Monday excepted), 1.30 P. M.

GOING UPWARDS:
Leave Oswego, Daily, (Sundays excepted), 10.00 P. M.
" Kingston, Daily, (Monday excepted), 4.45 "
" Toronto, Daily, (Monday excepted), 1.30 P. M.

GOING UPWARDS:
Leave Oswego, Daily, (Sundays excepted), 10.00 P. M.
" Kingston, Daily, (Monday excepted), 4.45 "
" Toronto, Daily, (Monday excepted), 1.30 P. M.

GOING UPWARDS:
Leave Oswego, Daily, (Sundays excepted), 10.00 P. M.
" Kingston, Daily, (Monday excepted), 4.45 "
" Toronto, Daily, (Monday excepted), 1.30 P. M.

GOING UPWARDS:
Leave Oswego, Daily, (Sundays excepted), 10.00 P. M.
" Kingston, Daily, (Monday excepted), 4.45 "
" Toronto, Daily, (Monday excepted), 1.30 P. M.

Miscellaneous.
Boots & Shoes.
NEW ESTABLISHMENT.
T. SULLIVAN, Proprietor.

THE SUBSCRIBER informs the public generally that he has opened a Boot and Shoe Store on West First Street,

Employing the best of workmen, he will be enabled to perform custom work in a manner which he flatters himself will prove satisfactory to his customers.

Ladies will find a full assortment of Goods, from which to select.

CHILDREN'S SHOES,
LADIES' KID & PRUNELLA
ONGRES AND LAKE GAITERS,

Bootees, Buskins, Slippers, &c.,
of the latest and most fashionable styles, which will be kept constantly on hand, or will be made to order.

CHILDREN'S SHOES,
LADIES' KID & PRUNELLA
ONGRES AND LAKE GAITERS,

Bootees, Buskins, Slippers, &c.,
of the latest and most fashionable styles, which will be kept constantly on hand, or will be made to order.

CHILDREN'S SHOES,
LADIES' KID & PRUNELLA
ONGRES AND LAKE GAITERS,

Bootees, Buskins, Slippers, &c.,
of the latest and most fashionable styles, which will be kept constantly on hand, or will be made to order.

CHILDREN'S SHOES,
LADIES' KID & PRUNELLA
ONGRES AND LAKE GAITERS,

Bootees, Buskins, Slippers, &c.,
of the latest and most fashionable styles, which will be kept constantly on hand, or will be made to order.

CHILDREN'S SHOES,
LADIES' KID & PRUNELLA
ONGRES AND LAKE GAITERS,

Bootees, Buskins, Slippers, &c.,
of the latest and most fashionable styles, which will be kept constantly on hand, or will be made to order.

CHILDREN'S SHOES,
LADIES' KID & PRUNELLA
ONGRES AND LAKE GAITERS,

Bootees, Buskins, Slippers, &c.,
of the latest and most fashionable styles, which will be kept constantly on hand, or will be made to order.

CHILDREN'S SHOES,
LADIES' KID & PRUNELLA
ONGRES AND LAKE GAITERS,

Bootees, Buskins, Slippers, &c.,
of the latest and most fashionable styles, which will be kept constantly on hand, or will be made to order.

CHILDREN'S SHOES,
LADIES' KID & PRUNELLA
ONGRES AND LAKE GAITERS,

Bootees, Buskins, Slippers, &c.,
of the latest and most fashionable styles, which will be kept constantly on hand, or will be made to order.

CHILDREN'S SHOES,
LADIES' KID & PRUNELLA
ONGRES AND LAKE GAITERS,

Bootees, Buskins, Slippers, &c.,
of the latest and most fashionable styles, which will be kept constantly on hand, or will be made to order.

CHILDREN'S SHOES,
LADIES' KID & PRUNELLA
ONGRES AND LAKE GAITERS,

Bootees, Buskins, Slippers, &c.,
of the latest and most fashionable styles, which will be kept constantly on hand, or will be made to order.

CHILDREN'S SHOES,
LADIES' KID & PRUNELLA
ONGRES AND LAKE GAITERS,

Bootees, Buskins, Slippers, &c.,
of the latest and most fashionable styles, which will be kept constantly on hand, or will be made to order.

CHILDREN'S SHOES,
LADIES' KID & PRUNELLA
ONGRES AND LAKE GAITERS,

Bootees, Buskins, Slippers, &c.,
of the latest and most fashionable styles, which will be kept constantly on hand, or will be made to order.

CHILDREN'S SHOES,
LADIES' KID & PRUNELLA
ONGRES AND LAKE GAITERS,

Bootees, Buskins, Slippers, &c.,
of the latest and most fashionable styles, which will be kept constantly on hand, or will be made to order.

INSURANCE.
OSWEGO INSURANCE OFFICE.
Marine and Canal Insurance.

MERCANTILE MUTUAL INSURANCE CO.
Assets, \$1,325,000.
NO. 85 WALL STREET, NEW YORK.

SECURITY FIRE INSURANCE COMPANY.
Cash Capital and Surplus, \$64,000
NO. 81 PINE STREET, NEW YORK.

Police issued in the above Reliable Companies on Hulls and Cargoes on the Lakes, and Cargoes on the Canal, at as low rates as other Good Companies.

Losses promptly and liberally adjusted, and paid by sight drafts on the Companies in New York.

JOHN B. C. MORRIS, Agent.
JOHN H. JOHNSON, Inspector.

FIRE INSURANCE.
Security Fire Insurance Company, NEW YORK.
Capital and Surplus, \$64,000

Atlantic Fire & Marine Insurance Co., PROVIDENCE, R. I.
Capital and Surplus, \$230,000

Western Massachusetts Insurance Co., PITTSFIELD, MASS.
Capital and Surplus, \$238,000

Springfield Fire & Marine Insurance Co., SPRINGFIELD, MASS.
Capital and Surplus, \$438,000

Hampden Fire Insurance Company, SPRINGFIELD, MASS.
Capital and Surplus, \$214,000

Massachusetts Insurance Company, SPRINGFIELD.
Capital and Surplus, \$270,000

Continental Insurance Company, NEW YORK.
Capital, \$1,024,750

Lamar Fire Insurance Company, NEW YORK.
Capital, \$344,000

Hanover Fire Insurance Company, NEW YORK.
Cash Capital and Surplus, \$245,000

Standard Fire Insurance Company, NEW YORK.
Cash Capital and Surplus, \$223,000

Columbia Fire Insurance Company, NEW YORK.
Cash Capital and Surplus, \$230,000

Lenox Fire Insurance Company, NEW YORK.
Capital, \$177,000

Resolute Fire Insurance Co., NEW YORK.
Capital, \$271,700

Unity Fire Insurance Company, LONDON.
Subscribed Capital, \$10,000,000

A special fund of \$100,000 is held by the New York Trustees for the benefit of Policyholders in accordance with the law of the State.

JOHN B. C. MORRIS, Agent.
JOHN H. JOHNSON, Inspector.

ETNA INSURANCE COMPANY.
HARTFORD, CONN.
Capital and Surplus, \$2,000,000

Fulton Fire Insurance Company, NEW YORK.
Capital, \$200,000

North American Fire Insurance Co., HARTFORD, CONN.
Capital and Surplus, \$247,000

Three Fire Insurance Company, NEW YORK.
Capital, \$300,000

New England Fire and Marine Ins. Co., HARTFORD, CONN.
Capital and Surplus, \$238,000

Republic Fire Insurance Company, NEW YORK.
Capital and Surplus, \$200,000

Commerce Insurance Company, OF ALBANY.
Capital, \$200,000

HOPKINS FIRE INSURANCE COMPANY.
PROVIDENCE, R. I.
Capital, \$100,000

Gen. Blunt's New Command.
Details of the Recent Fight in the Cherokee Settlement of the Indian Territory.

The Complete Route of the Rebel Forces.
[Correspondence of the New York Herald.]

HEADQUARTERS, ARMY OF THE FRONTIER, CAMP OBER, CHEROKEE NATION, July 23d.

Major-General Blunt, with eight companies of cavalry under his command, arrived at this point to-day on the way to Fort Blunt.

This encampment is on the banks of a small stream, a branch of the Neosho, or, as it is called in this region, the Grand River.

It was the scene some days since of a sharp engagement between a Union force under Col. J. M. Williams, 1st Kansas Colored Volunteers, commanding that regiment and the 2d Colorado Volunteers, with a detachment of cavalry, escorting a train to Fort Blunt, and a rebel force of Texans and Indians, under Colonel Standwaite, a Cherokee half-bred.

The particulars of the affair are about as follows: A supply train, consisting of two hundred and eighteen wagons, containing subsistence, &c., for Colonel Phillips' command, on the Arkansas, and a number of sutler wagons, with a subsistence train for the refugees, numbering in all about three hundred wagons, left Fort Scott about the 25th of June.

It was escorted by two companies of the 3d Wisconsin cavalry, under Capt. Moore, who was in command of the escort; two companies of the 9th Kansas cavalry, under Capt. J. E. Stuart; one company of the 6th Kansas cavalry, and two new companies raised for the latter regiment, but mustered into the new cavalry organization, the 14th Kansas Volunteers.

This, with two twelve-pound howitzers, constituted the train escort. They met nothing remarkable between Fort Scott and Baxter's Springs. Here they found the 1st Kansas colored infantry, Col. Williams, with a section of the 2d Kansas battery, and six companies of the 2d Colorado Volunteer infantry, Lieut.-Col. Dodd, waiting to move with the train.

Col. Williams, as the ranking officer, assumed command of the entire force, which reached, in effective strength, to about one thousand six hundred men and five guns.

On the 13th of June our advance guard came upon a scouting party of thirty men from Standwaite's command, seven miles from the place of this encampment. A brisk engagement ensued, in which the rebels lost seven killed and wounded. The party consisted of Texans and Indians.

Colonel Williams was informed by the wounded prisoners that Standwaite, with one thousand six hundred men, was encamped in a strong position on the south side of Cabin Creek. It being near night, it was decided to encamp the train and force, send out scouting parties to feel the enemy, and press forward in the morning.

This was done. That evening our scout, exchanged shots with the rebel pickets on the north side of the creek. The stream is narrow and at times deep, the current running with great swiftness. Such was the case at this time.

Early in the morning of the 1st of July, Colonel Williams moved his command forward to an advantageous position on the prairie overlooking the creek bottom, and near the dense timber, which is over a mile broad, the major portion being on the north side of the stream. The south side was lined with dense brush, and the banks were quite steep. Behind this the rebels were posted. The train was concealed, and Col. Williams with eight companies of the First Kansas colored, four of the Second Colorado, and a portion of the cavalry and the three howitzers, moved down to the creek. A large force of negro skirmishers was deployed. It was found that the north side was clear of rebels.

On reaching the bank of the creek it was found impossible to ford, the current being very swift, and the enemy being strongly and advantageously posted.

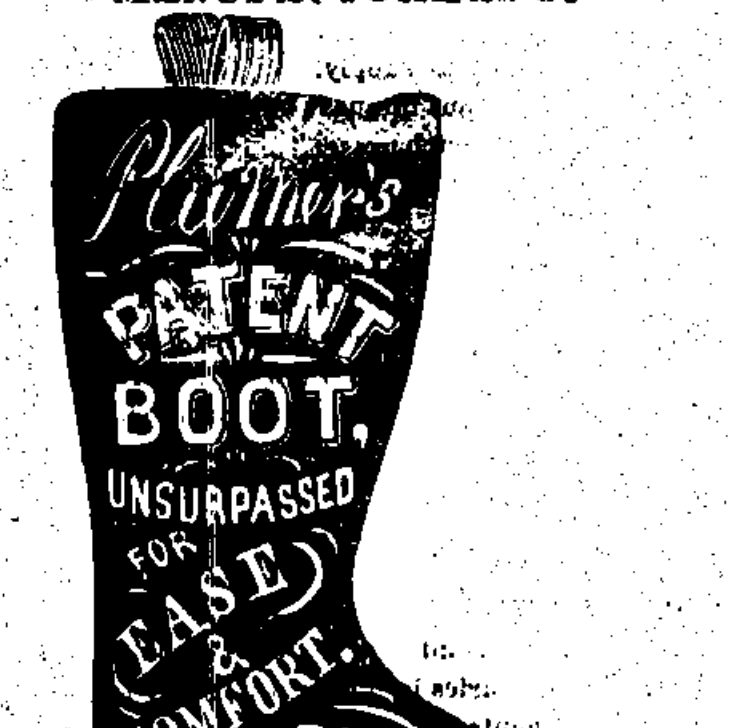
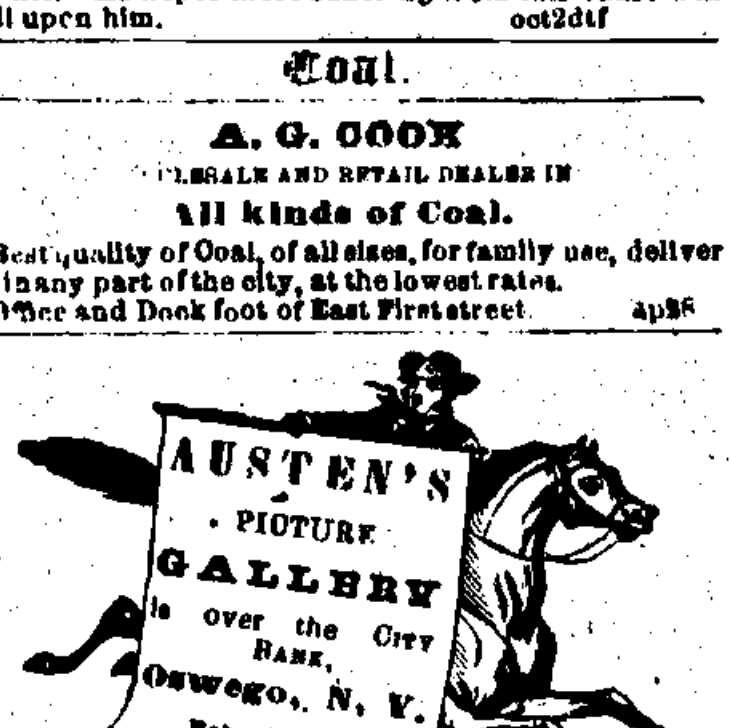
The howitzers were ordered in position, and for a couple of hours the rebel position was shelled. It was almost impossible to discover their force, except by the interchange of musketry between the skirmishers. Nothing decisive occurred that day, in the course of which our forces were reinforced by a detachment from the Indian brigade, under Major Forman, of the Third regiment, numbering five hundred men and one howitzer, sent forward by Col. Phillips to reinforce the train.

Early on the morning of the 2d the attack recommenced on Standwaite's position. Col. Williams, after shelling the enemy's lines, formed the colored regiment, four or five companies of the Colorado Second and a portion of the cavalry, dismounted as skirmishers, and moved across the stream, in face of a heavy fire, forming and deploying in perfect order on the opposite bank, and charging upon and utterly routing the rebels, who fled in confusion, throwing away arms and accoutrements. As the brush was so dense, they made good their escape with the most of their wounded.

The gallant affair cost us severely. Five negro soldiers were wounded, two of the Colorado Second, one Indian killed and several wounded, and fifteen of Capt. Stuart's command, Ninth Kansas cavalry, were wounded. Five white and Indian soldiers were killed; Major Forman, commanding the Indians, received three severe flesh wounds, none of which are dangerous, and in all about thirty were wounded. The enemy had every advantage of position, and, if they had had artillery, could have maintained themselves till their reinforcements arrived.

From prisoners Col. Williams learned that about one thousand five hundred men were detained by high water at the Grand river, sent as a reinforcement to Standwaite and, understanding Col. Phillips' command at Fort Blunt to be in need of supplies, also fearing that the routed rebels might rally on these reinforcements, he determined to push forward to the fort, some sixty miles distant, as quickly as possible. This was done, and we learn by return train that they reached that post without further encounter and in safety.

All those in the return train present at the Chain creek fight unite in praising the daring courage of our troops in crossing the stream under the enemy's fire. Especially do they accord praise to the valor and discipline of the negro soldiers whose



AUSTEN'S PICTURE GALLERY
over the City Hall, Oswego, N. Y.
Feb 14, 1863.

PATENT BOOT
UNSURPASSED FOR LEASE
CONTRACT TRY A PAIR.

NEW HARDWARE FIRM!
CHAS. DOOLITTLE
HAVING REMOVED his entire stock of Goods to the opposite side of the road, to No. 71 East First Street,